

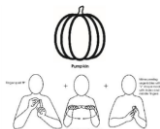


## This Weeks 'What's Happening'



On **Tuesday** why not join in with **Walk and Talk Café** for all parents and carers meeting at **Cliffe Castle** at **9.15am**. To book a place, please email [office@strongclose.co.uk](mailto:office@strongclose.co.uk) or call 01535 605272. With thanks to the **Keighley Big Local** who are part funding refreshments in the café.

**Monday**  
**18<sup>th</sup> October**



Our sign of the week is "**Pumpkin**"  
Watch Lucinda make the actions for the sign at <https://www.youtube.com/watch?v=sO44ExWU>



**Tuesday**  
**19<sup>th</sup> October**



In **red room** the children have continued to make marks by mixing pallet paints together and printing using dried leaves. Next week, to enhance this autumn theme we will be introducing pumpkins to explore with. This can also support their rotational schema play and encourage the children to engage physically as they roll the pumpkins through the paint and discuss the texture of the pumpkins and paint. Why not visit <https://www.bbc.co.uk/tiny-happy-people/exploring-nature/zvpvy9q> to explore nature and autumn at home or in the park.

**Wednesday**  
**20<sup>th</sup> October**

Would you like to learn about simple fun activities to do with your 0-5 year olds? Join us for our **50 Things to do Before You're 5 Workshop at Strong Close** at **9.15am or 1.00pm today**. To book a place please email [office@strongclose.co.uk](mailto:office@strongclose.co.uk) or call **01535 605272**



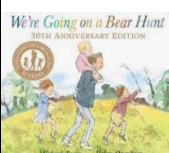
**Thursday**  
**21<sup>st</sup> October**



Last week in **blue, yellow** and **green** groups we have continued our sensory exploration play, using cloud dough, and using their hands to tell us how it feels. This week we are going to develop this interest by using different sensory materials such as, soap flakes and shaving foam for the children to explore. Why not visit <https://www.bbc.co.uk/tiny-happy-people/messy-play/zr87qp3> to see how messy play can help to build your child's imagination and give them confidence to use new words.

**Friday**  
**22<sup>nd</sup> October**

**SCHOOL IS CLOSED TODAY FOR A TRAINING DAY BEFORE THE HALF TERM HOLIDAY. WE LOOK FORWARD TO SEEING YOU AGAIN ON MONDAY 1<sup>ST</sup> NOVEMBER AFTER THE HOLIDAY**



Watch Laura and Elena explore **blue** and **yellow** rooms' core story of **We're Going on a Bear Hunt** as they visit the different environments from the story outside. See the video on our Facebook page at <https://www.facebook.com/StrongCloseNS/videos>



Make Your Mark  
Children love to be able to make their mark, as babies, toddlers and pre-s...

**Make Your Mark # 4.** Children love to be able to make their mark and their growing skill with paint, pen, crayons and chalk supports them to be strong writers and makers of art!

Download the app at <https://bradford.50thingstodo.org/app/os#>

