



This Weeks 'What's Happening'

Parent/ carer consultations. This week key persons for certain children in **blue** and **yellow** rooms will be doing parent/carer consultations. Please check your emails including the junk folder for the details. If you've had an email with details of how you can book your appointment, but haven't yet booked then please contact the office to see if there is still availability on **01535 605272** or **office@strongclose.co.uk**

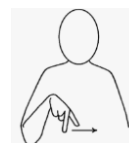


To view this week's menu please visit the news section of our website and **Week 2 for our new winter menu.** Why not try some of the Better Health, Healthier Families recipes at home! Visit <https://www.nhs.uk/healthier-families/recipes/>

This week in nursery

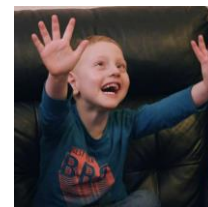


Our sign of the week is **Walk.**
Watch Lucinda make the actions for the sign at <https://www.youtube.com/watch?v=rxqt8EcXCGY>



This week in nursery

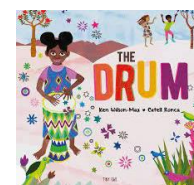
Green room's Sensory Circuit takes place every Tuesday morning and Thursday afternoon. The children have opportunities to develop their sensory interests through touch, sights, sounds and movement. Visit Tiny Happy People to find out how children can communicate through movement and sounds at <https://www.bbc.co.uk/tiny-happy-people/SEND-speech-language-needs-how-children-use-bodies-actions-gestures/zxttwnb>



This week in the 2-3-year-old rooms



In **red** and **purple** rooms, the children have been exploring musical instruments at group time making loud, quiet, fast and slow sounds. This week we will be exploring our core story **The Drum by Ken Wilson-Max**. Visit Tiny Happy People- Encouraging musical play with toddlers and how to extend your child's language at



<https://www.bbc.co.uk/tiny-happy-people/the-toddler-club-musical-play/zxf9dp3>

This week in the 3-5-year-old rooms

In **blue**, **yellow** and **green** rooms the children have been making a collaborative model and connecting boxes together to make towers. They have also added a variety of materials including lolly sticks to enhance their models. This week we will be exploring different construction kits that connect together which is linked to the disconnecting and connecting schema, for repeating patterns of play. For more information on the connection schema visit <https://www.youtube.com/watch?v=BGjNIT99Z9g>



Friday 11th November



In **blue**, **yellow** and **green** rooms a small group of children will be visiting residents at the nearby Regency Court nursing home as part of the local authority's **Intergenerational Linking Project**



Watch Nicola reading blue and yellow rooms core story this half term of **The Tiger Who Came To Tea by Judith Kerr**
See the video on our Facebook page at <https://www.facebook.com/StrongCloseNS/videos>

