



## This Weeks 'What's Happening'

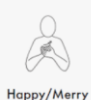


After the Covid pandemic it is wonderful to start celebrating festivals again. We close for the holidays on **Friday 16<sup>th</sup> December** and will see you all again on **Wednesday 4<sup>th</sup> January** when the school reopens after the Christmas Holiday. Everyone at Strong Close would like to wish you a Merry Christmas and a Happy new 2023!



To view this week's menu please visit the news section of our website and **Week 3 for our new winter menu**. Why not try some of the Better Health, Healthier Families recipes at home! Visit <https://www.nhs.uk/healthier-families/recipes/>

This week



Our sign of the week this week is "Merry Christmas"

Watch how to do the sign with Lucinda at

<https://www.youtube.com/watch?v=pbbtBxysJ4c>



Friday



On Monday morning (for those attending beginning of the week and morning sessions) and Friday afternoon (for those attending the end of the week and afternoon sessions) the children will be watching the Cbeebies **Christmas selection** and **The Snowman**.



Wednesday 15th December

We will finish selling our **Christmas raffle tickets** for the Christmas Hamper and vouchers for local cafes and hairdressers on **Tuesday 13<sup>th</sup> December** and the draw will be announced on **Wednesday 14<sup>th</sup> December**. All proceeds will go to our summer school trip and the Keighley Imagination Library. The raffle will be drawn on Wednesday morning so that prizes can be given out as parents and carers pick up their children from the Christmas parties during the day. Thank you.



Wednesday 15th December



**Christmas Party Day**- the children can wear their favourite dressing up outfit or Christmas jumper as there will be no messy play activities today. There will be dancing playing games, enjoying party food and singing their Christmas songs. The morning party will be for Morning and Mon /Tue/ Wed children. See your child meet Santa at **10.45 am for red and purple classes** and **11.15am for green, blue and yellow classes**. And in the afternoon for Afternoon and Wed /Thur/ Fri children, at **2.30 pm for red and purple classes** and **3.00pm for green, blue and yellow classes**. If the parents/carers of those children that attend full time or fee paying, please let their class know which session you may be attending.

This week in red and purple classes



Further to children's interests in the enveloping schema we will be providing opportunities for children to wrap different sized boxes in Christmas wrapping paper and transport them outside to deliver their parcels to Santa's grotto den. Make a simple cosy corner enclosure den at home see the **BBC's Tiny Happy People** for more ideas at

<https://www.bbc.co.uk/tiny-happy-people/cosy-corner/zntb382>



This week in blue, yellow and green classes

This week we will be carrying on with our role play focus as the children have been very busy re-telling the Christmas stories. We will also be adding Christmas party plates and cups to the home corner to extend their play and talk about the party. Visit **50 Things To Do Before You're 5 #15 Dressing up** for more ideas. Download the app

<https://bradford.50thingstodo.org/app/os#>



Watch **all the Strong Close Nursery Staff** sing **We Wish you a Merry Christmas**

See the video on our Facebook page at

<https://www.facebook.com/StrongCloseNS/videos>

