



This Weeks 'What's Happening'



Those parents/carers of children that will be leaving us in July (because their child is the correct age to move onto school in September), will soon receive details of their child's **primary school allocation**. For further information on school admissions and appeals please visit the link below.

https://www.bradford.gov.uk/education-and-skills/school-admissions/apply-for-a-place-at-one-of-bradford-districts-schools/?utm_medium=email&utm_source=govdelivery



A very warm welcome to all our new families starting this half term.



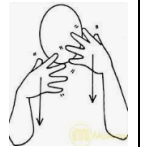
To view this week's menu please visit the news section of our website and **Week 2a from our summer menu**. Why not try some of the Better Health, Healthier Families recipes at home! Visit <https://www.nhs.uk/healthier-families/recipes/>



This week



Our sign of the week is **Rain**
Watch Lucinda and family make the sign at <https://www.facebook.com/watch/?v=1282862402060348>



This week

On returning to nursery after holidays in **yellow, green** and **blue** rooms, we noticed the wind had blown over the greenhouse and the seedlings were on the floor, the children helped to re-pot these. To extend the children's learning about growth they will be visiting our allotment to look after the seedlings, tidying the raised beds and get them ready for planting. At home you can sow seeds, prepare the ground and develop healthy food choices by teaching children where food comes from and get them excited about growing fruit and vegetables they will love to eat. See **50 Things To Do Before You're Five #19 Growing Little People Plants and Things** Download the app at <https://bradford.50thingstodo.org/app/os#>



This week



This week in the **red** and **purple** rooms we will be settling our new children into the daily routines and identifying any schematic or repeated patterns of play which they might engage in. As children grow older different schemas start to appear and this is what we will be looking to identify as the weeks progress so that we can tailor planning to children's interests, schemas and needs. See the link below for more information on schemas.

<https://www.familycorner.co.uk/why-does-she-always-do>

This week

In **blue, yellow** and **green** rooms, the children will be learning the new letter sounds of t. Watch the letter videos with Evie and Dodge on Cbeebies at: - <https://www.bbc.co.uk/cbeebies/watch/cbeebies-phonics-playlist#playlist>



Watch Lauren reading

Handa's Surprise by Eileen Browne

See the video on our Facebook page

at <https://www.facebook.com/StrongCloseNS/videos>

